

GL-FL100 Series

User's Manual

Thank you for choosing the GL-FL100 Series LED products.

Please install and use the products according to the following directions to ensure normal function and operation.

Please use stainless screw to fix holder and make sure screwed tightly.

Please do not add/remove any electrical components to/from the products or change/tamper the original electrical design without our permission.

Please do not add/remove any mechanical components to/from the products or change/tamper the original mechanical design without our permission.

If you do not follow these instructions to properly install and use the GL-FL100 Series, you will not be eligible for warranty compensation or protection.

We do not take any responsibility for product damage resulting from improper installation or abnormal usage.

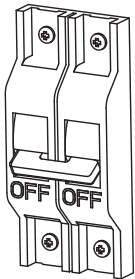


Installation Steps

The set up process should be executed by qualified (Certified) engineers.

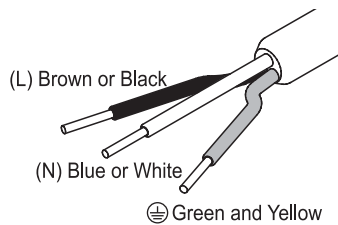
Step 1.

Before installation, please turn off the power switch.



Step 2.

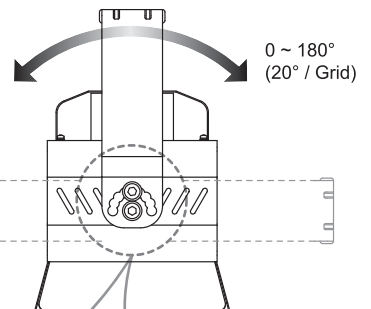
Connect the fixture's power cables to their corresponding colors of the power source and entwine together. Connect the grounding line to the grounding screw of the grounding devices.



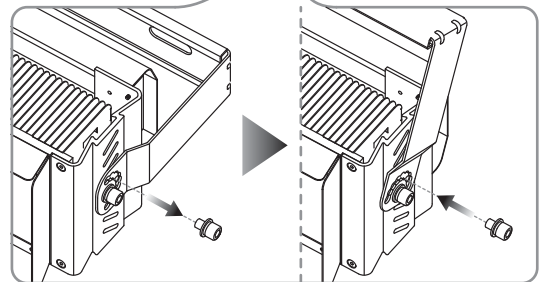
⊕ Grounding line should be fixed perpetually and not allow to disconnect.

Step 3.

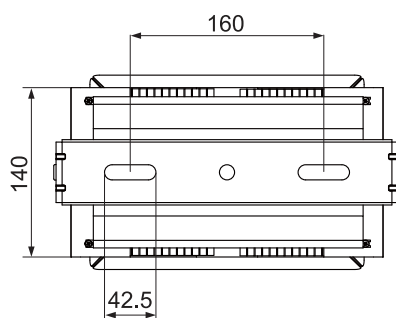
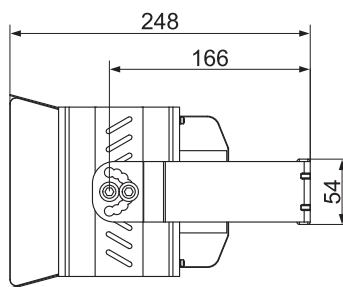
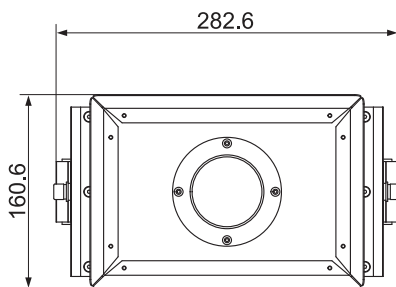
Screw the LED fixture tight onto a wall or a stand and adjust the angle in accordance with individual needs.



* Please use stainless screw to fix holder and make sure screwed tightly.



GL-FL100 Outlook



Net Weight:
4 Kg(with driver & lampshade)

UNIT:mm

Notices

1. Avoiding improper use to exceed the criterion limitation of lamp operation temperature.
2. Allow lamp to cool before replacing.
3. Not suitable for dimming function.

CAUTIONS

1. If the external flexible cable or cord of this luminaire is damaged, it shall be exclusively replaced by the manufacturer or his service agent or a similar qualified person in order to avoid a hazard.
2. Prior to installation, remove the AC power.



©2015 GlacialTech Inc. All rights reserved. All brand names and trademarks are the properties of their respective owners.
The specifications are subject to change without notice.
For further information please visit official website : www.GlacialLight.com



17-FLA0S000002

GL-FL100 系列 使用手冊

感謝您選擇使用 GL-FL100 系列LED燈具。

請您依據下列說明指示來安裝本產品，以確保本產品的正常運作。

請使用不鏽鋼螺絲固定支架，並確實鎖緊。

請勿增加或刪除任何電子元件，未經許可勿更改或修改電氣設計。

請勿增加或刪除任何機構元件，未經許可勿更改或修改機構設計。

如您未按說明指示妥善安裝以及正常使用GL-FL100，您的產品將無法得到正常的保修補償。

不正常的安裝與使用所造成的產品損壞，本公司具免責權利。

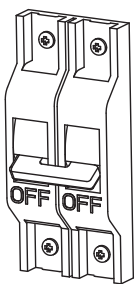


安裝指南

安裝流程應由合格的技術人員進行

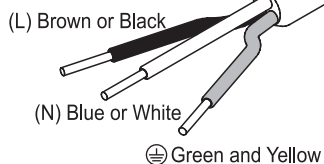
步驟 1.

安裝前，
請確實關閉交流電源開關。



步驟 2.

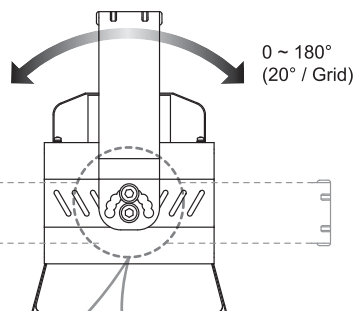
依照電源線的顏色配接，地線分別
接到固定板上的地線螺絲。



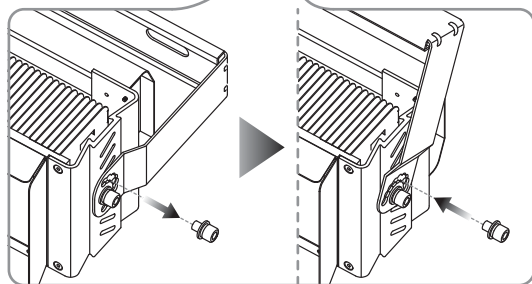
⊕ 接地線應永久固定連接，
不可斷開。

步驟 3.

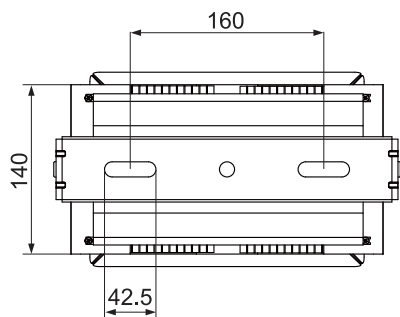
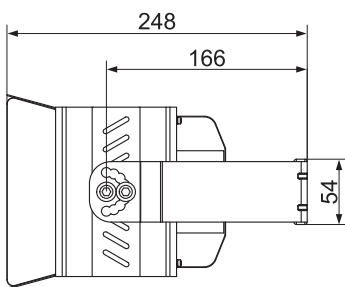
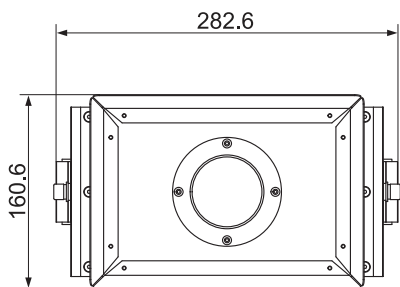
使用螺絲將燈具固定於牆面
或支架上。
依需求調整照射角度。



* 請使用不鏽鋼螺絲固定
支架，並確實鎖緊



BL100 外觀



淨重：
4公斤 (包含電源與燈罩)

尺寸單位：毫米

燈具使用注意事項

1. 避免使用超過燈具工作溫度標準外。
2. 請燈具冷卻之後再進行更換。
3. 不適合調光功能。

警告

1. 如果燈具外部纜線有損壞，應當由製造商、代理商或符合資格的施工人員做更換，以避免危險。
2. 安裝前，請確實關閉交流電源。

