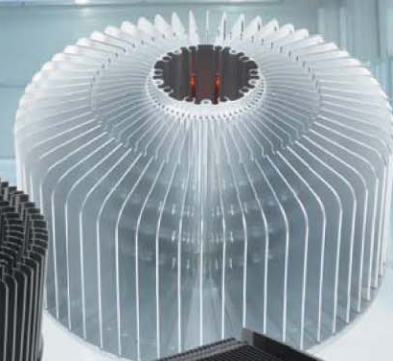
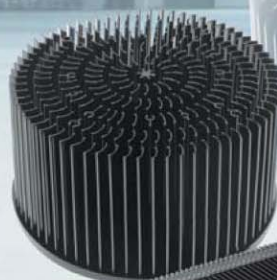


LED Heat Sink Products
LED 散热模组产品目录



LED SKD Package Heat Sink Thermal Components

GlacialTech Inc. is a diversified provider of thermal, power, optics and systems solutions, with many years of experience in thermal module design and manufacturing for internationally renowned brands including Acer, AdvanTech, Fujitsu Siemens Computers GmbH, Panasonic and Siemens AG. GlacialTech's product solutions attain an optimal balance of performance and value. For more information about GlacialTech thermal technology, please visit at www.GlacialTech.com.

洋鑫科技是一家提供散热、电源、光学和系统设计的多元化企业。具有多年的散热模组设计和制造的经验，过去提供国际知名品牌包括Acer、AdvanTech、Fujitsu Siemens Computers GmbH、Panasonic和Siemens AG的散热解决方案。洋鑫科技的产品解决方案，实现了性能和价值的最佳平衡。

■ Cold Forging .. 02 ..
冷 鍛

■ Stamping .. 06 ..
沖 壓

■ SKD Package Solutions .. 12 ..
SKD 套件解決方案

Cold Forging 冷锻

Material 材料: AL1070

Surface treatment 表面处理: Anode

Crafts 制程: Cold forging

Model No.	Igloo FR035	Igloo FR050A	Igloo FR050B
Product			
Dimension (mm)	$\Phi 35 \times 30$	$\Phi 50 \times 50$	$\Phi 50 \times 50$
Base thickness (mm)	5	5	5
Weight (g) (+/-3%)	23	65	70
Reference design power (W)	5W	6~8W	10W




Model No.	Igloo FR071B	Igloo FR080	Igloo FR084
Product			
Dimension (mm)	$\Phi 71 \times 50$	$\Phi 80 \times 55$	$\Phi 84 \times 60$
Base thickness (mm)	5	5	5
Weight (g) (+/-3%)	150	205	190
Reference design power (W)	15W	18W	20W

Material 材料: AL1070

Surface treatment 表面处理: Anode

Crafts 制程: Cold forging

Model No.	Igloo FR090	Igloo FR095	Igloo FR105
Product			
Dimension (mm)	Φ 90 × 60	Φ 95 × 60	Φ 105 × 40
Base thickness (mm)	5	5	3.5
Weight (g) (+/-3%)	200	320	250
Reference design power (W)	15~18W	35W	20W

Model No.	Igloo FR111B	Igloo FR120A	Igloo FR120B
Product			
Dimension (mm)	Φ 111 × 70	Φ 120 × 67	Φ 120 × 70
Base thickness (mm)	5	7	10
Weight (g) (+/-3%)	370	570	540
Reference design power (W)	40W	45W	45W

Cold Forging 冷锻

Material 材料: AL1070

Surface treatment 表面处理: Anode

Crafts 制程: Cold forging




Model No.	Igloo FR120C	Igloo FR133	Igloo FR150
Product			
Dimension (mm)	Φ 120 × 60	Φ 133 × 70	Φ 150 × 70
Base thickness (mm)	7	10	10
Weight (g) (+/-3%)	420	670	850
Reference design power (W)	40W	50W	60W

Model No.	Igloo FR163	Igloo FR210B	Igloo FR210C
Product			
Dimension (mm)	Φ 163 × 70	Φ 210 × 66	Φ 210 × 87
Base thickness (mm)	10	6	7
Weight (g) (+/-3%)	1010	1185	1560
Reference design power (W)	65W	100W	150W

Material 材料: AL1070

Surface treatment 表面处理: Anode

Crafts 制程: Cold forging

Model No.	Igloo FR210D	Igloo FS125	Igloo FS128
Product			
Dimension (mm)	Φ 210 × 108	125 × 125 × 63	128 × 128 × 35
Base thickness (mm)	8	9	8
Weight (g) (+/-3%)	2180	735	560
Reference design power (W)	200W	60W	50W

Example :



Stamping 冲压

Φ 210mm

-PATENTED-

Model No. 型号:

Iglloo SR100



Dimension (mm) 尺寸: Φ 210 × 85

Weight (g) (+/-3%) 重量: 950

Material 材料: AL1050

Surface treatment 表面处理: Anode

Crafts 制程: Stamping+bonding

Thermal resistance (°C / W) 热电阻: 0.7074

Surface area (mm²) 表面积: 429156

Reference design power (W) 建议使用瓦数: 100W

Model No. 型号:

Iglloo SR150



Dimension (mm) 尺寸: Φ 210 × 125

Weight (g) (+/-3%) 重量: 1300

Material 材料: AL1050

Surface treatment 表面处理: Anode

Crafts 制程: Stamping+bonding

Thermal resistance (°C / W) 热电阻: 0.5489

Surface area (mm²) 表面积: 1041997

Reference design power (W) 建议使用瓦数: 150W

Model No. 型号:

Iglloo SR200



Dimension (mm) 尺寸: Φ 210 × 165

Weight (g) (+/-3%) 重量: 1700

Material 材料: AL1050

Surface treatment 表面处理: Anode

Crafts 制程: Stamping+bonding

Thermal resistance (°C / W) 热电阻: 0.4883

Surface area (mm²) 表面积: 1212070

Reference design power (W) 建议使用瓦数: 200W

Stamping 沖壓

Φ 210mm

Model No. 型号:
Igloo SR200HP



Dimension (mm) 尺寸: Φ 210 × 125

Weight (g) (+/-3%) 重量: 1250

Material 材料: AL1050 + 4 Heat Pipes

Surface treatment 表面处理: Anode

Crafts 制程: Stamping+bonding

Thermal resistance (°C / W) 热电阻: 0.5094

Surface area (mm²) 表面积: 1041997

Reference design power (W) 建议使用瓦数: 200W

Model No. 型号:
Igloo SR250HP



Dimension (mm) 尺寸: Φ 210 × 165

Weight (g) (+/-3%) 重量: 1650

Material 材料: AL1050 + 4 Heat Pipes

Surface treatment 表面处理: Anode

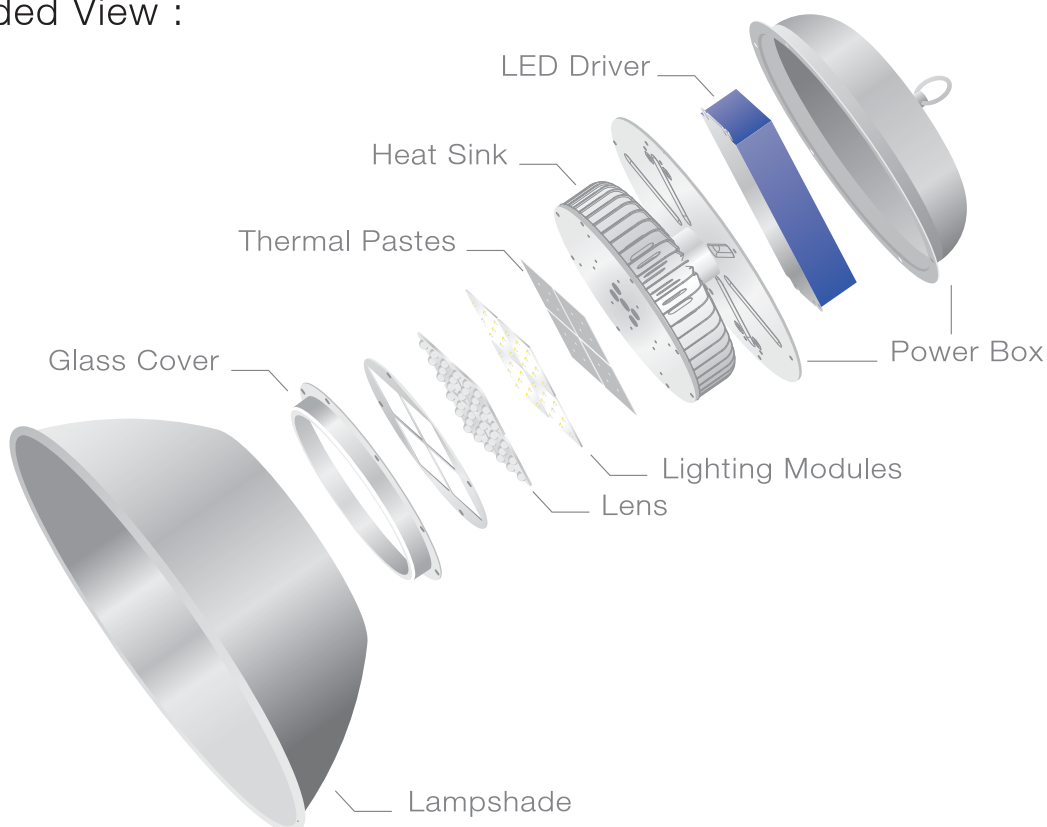
Crafts 制程: Stamping+bonding

Thermal resistance (°C / W) 热电阻: 0.3887

Surface area (mm²) 表面积: 1212070

Reference design power (W) 建议使用瓦数: 250W

Exploded View :



Stamping 冲压

Φ 300mm / Multi-Chip

Model No. 型号:
Igloo SR250-3M



Dimension (mm) 尺寸: Φ 300 × 115

Weight (g) (+/-3%) 重量: 2804

Material 材料: AL1050

Surface treatment 表面处理: Anode

Crafts 制程: Stamping+bonding

Thermal resistance (°C / W) 热电阻: 0.2861

Surface area (mm²) 表面积: 1335810

Reference design power (W) 建议使用瓦数: 250W

Model No. 型号:
Igloo SR300-3M

Dimension (mm) 尺寸: Φ 300 × 165

Weight (g) (+/-3%) 重量: 3650

Material 材料: AL1050

Surface treatment 表面处理: Anode

Crafts 制程: Stamping+bonding

Thermal resistance (°C / W) 热电阻: 0.2622

Surface area (mm²) 表面积: 1997348

Reference design power (W) 建议使用瓦数: 300W



Model No. 型号:
Igloo SR400HP-3M



Dimension (mm) 尺寸: Φ 300 × 205

Weight (g) (+/-3%) 重量: 4560

Material 材料: AL1050 + 2Heat Pipes

Surface treatment 表面处理: Anode

Crafts 制程: Stamping+bonding

Thermal resistance (°C / W) 热电阻: 0.2459

Surface area (mm²) 表面积: 2513340

Reference design power (W) 建议使用瓦数: 400W

Model No. 型号:
Igloo SR500HP-3M

Dimension (mm) 尺寸: Φ 300 × 265

Weight (g) (+/-3%) 重量: 5680

Material 材料: AL1050 + 2Heat Pipes

Surface treatment 表面处理: Anode

Crafts 制程: Stamping+bonding

Thermal resistance (°C / W) 热电阻: 0.2411

Surface area (mm²) 表面积: 3253080

Reference design power (W) 建议使用瓦数: 500W



Stamping 冲壓

Φ 300mm / Single CoB

Model No. 型号:
Iglloo SR250HP-3S



Dimension (mm) 尺寸: Φ 300 × 115
 Weight (g) (+/-3%) 重量: 2804
 Material 材料: AL1050 + 5Heat Pipes
 Surface treatment 表面处理: Anode
 Crafts 制程: Stamping+bonding
 Thermal resistance (°C / W) 热电阻: 0.3516
 Surface area (mm²) 表面积: 1335810
 Reference design power (W) 建议使用瓦数: 250W

Model No. 型号:
Iglloo SR300HP-3S

Dimension (mm) 尺寸: Φ 300 × 165
 Weight (g) (+/-3%) 重量: 3650
 Material 材料: AL1050 + 5Heat Pipes
 Surface treatment 表面处理: Anode
 Crafts 制程: Stamping+bonding
 Thermal resistance (°C / W) 热电阻: 0.3239
 Surface area (mm²) 表面积: 1997348
 Reference design power (W) 建议使用瓦数: 300W



Model No. 型号:
Iglloo SR400HP-3S



Dimension (mm) 尺寸: Φ 300 × 205
 Weight (g) (+/-3%) 重量: 4560
 Material 材料: AL1050 + 5Heat Pipes
 Surface treatment 表面处理: Anode
 Crafts 制程: Stamping+bonding
 Thermal resistance (°C / W) 热电阻: 0.3075
 Surface area (mm²) 表面积: 2513340
 Reference design power (W) 建议使用瓦数: 400W

Model No. 型号:
Iglloo SR500HP-3S

Dimension (mm) 尺寸: Φ 300 × 265
 Weight (g) (+/-3%) 重量: 5680
 Material 材料: AL1050 + 5Heat Pipes
 Surface treatment 表面处理: Anode
 Crafts 制程: Stamping+bonding
 Thermal resistance (°C / W) 热电阻: 0.2903
 Surface area (mm²) 表面积: 3253080
 Reference design power (W) 建议使用瓦数: 500W



Example



Accessory




SKD Package Solutions

LED Flood Light SKD Package

FL15 / FL35 SKD Solutions (complete set for local assembly)

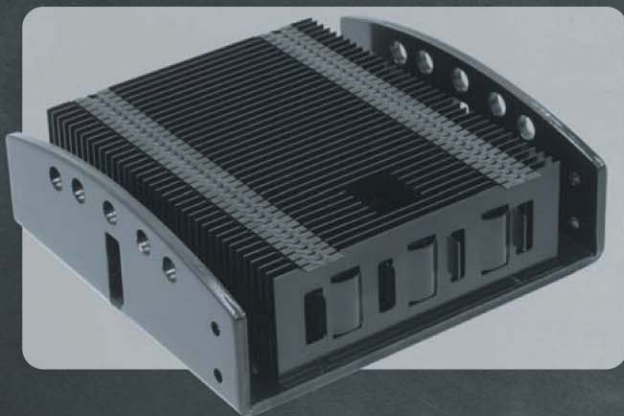
Semi-Knock Down Kit Makes it Easy to Create IP66 Rugged,
High-performing Spotlights, Flood lights or Track Lights



 Please visit our website for more detailed information



Igloo SS60 LED Flood Light Knock Down Kit



Dimension (mm) : 165 x 171 x 59

Weight (g) (+/-3%) : 1000

Material : AL6063 + AL1050

Surface treatment : Black Anode

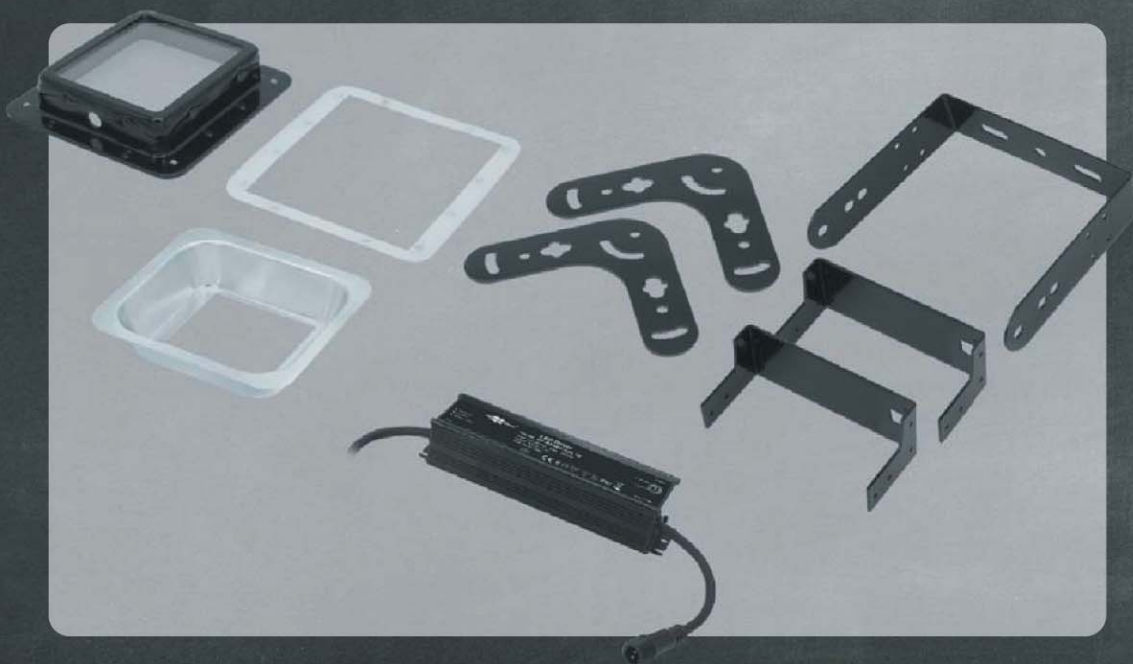
Crafts : Stamping+bonding

Thermal resistance ($^{\circ}\text{C} / \text{W}$) : 0.5942

Surface area (mm^2) : 528047

Reference design power (W) : 60W
(up to 80W)

Accessory:



Example:



Please visit our website for more detailed information



SKD Package Solutions

Igloo SS80

LED Flood Light Knock Down Kit



Dimension (mm) : 244 x 140 x 50

Weight (g) (+/-3%) : 1000

Material : AL6063 + AL1050

Surface treatment : Black Anode

Crafts : Stamping+bonding

Thermal resistance ($^{\circ}\text{C} / \text{W}$) : 0.9161

Surface area (mm^2) : 625738

Reference design power (W) : 80W
(up to 100W)

Accessory:



Example:



Please visit our website for more detailed information



Igloo SS80 PLUS

LED Flood Light Knock Down Kit

Dimension (mm) : 244 x 140 x 100

Weight (g) (+/-3%) : 1470

Material : AL6063 + AL1050

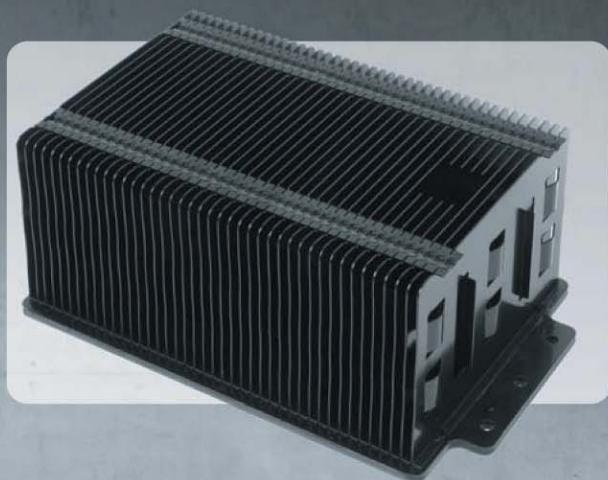
Surface treatment : Black Anode

Crafts : Stamping+bonding

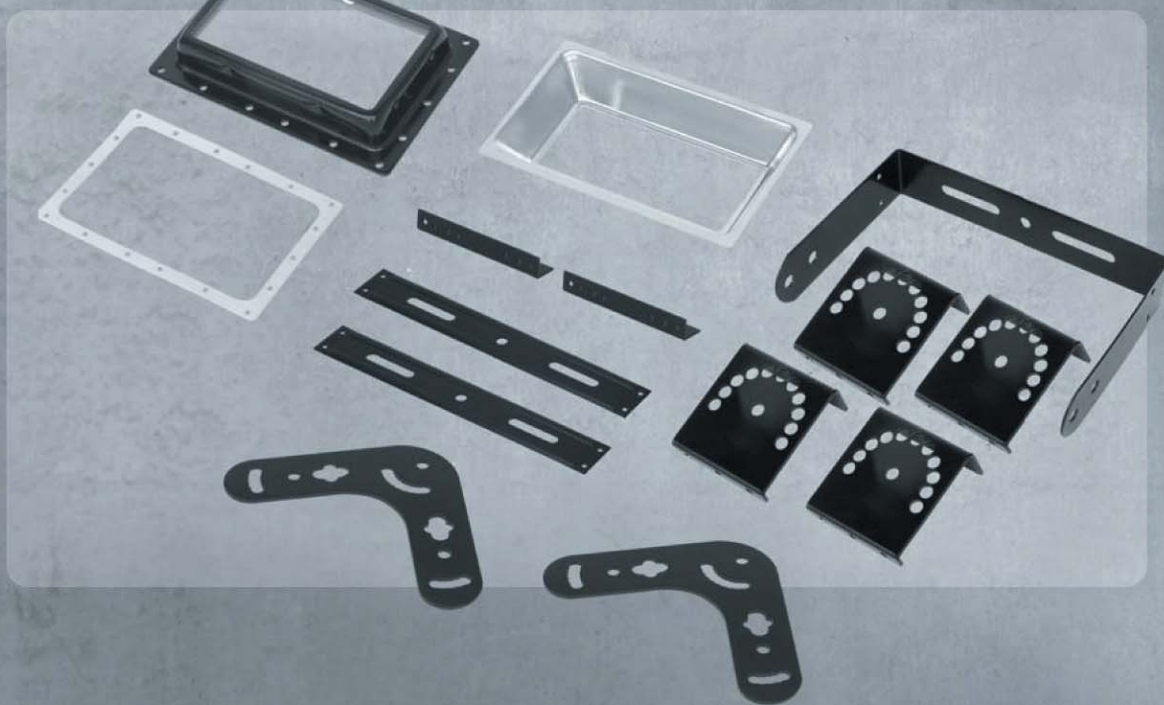
Thermal resistance (°C / W) : 0.4019

Surface area (mm²) : 1171250

Reference design power (W) : 130W
(up to 150W)




Accessory:



Example:

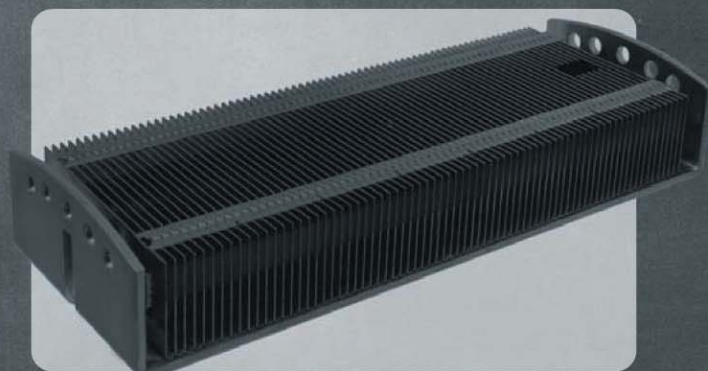


 Please visit our website for more detailed information



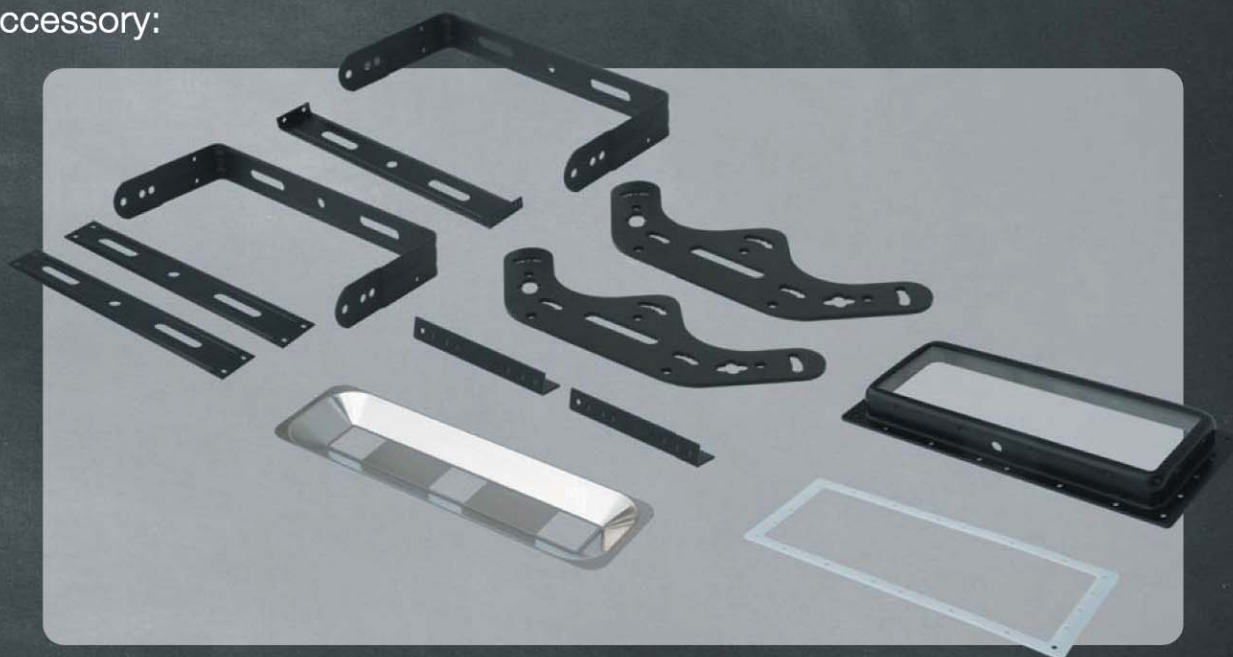
SKD Package Solutions

Igloo SS120 LED Flood Light Knock Down Kit



Dimension (mm) : 368 x 133 x 60
 Weight (g) (+/-3%) : 1720
 Material : AL1050
 Surface treatment : Black Anode
 Crafts : Stamping+bonding
 Thermal resistance ($^{\circ}\text{C} / \text{W}$) : 0.3417
 Surface area (mm^2) : 1047000
 Reference design power (W) : 120W

Accessory:



Example:



Please visit our website for more detailed information



Igloo SS120 PLUS

LED Flood Light Knock Down Kit

Dimension (mm) : 370 x 134 x 115

Weight (g) (+/-3%) : 2930

Material : AL1100

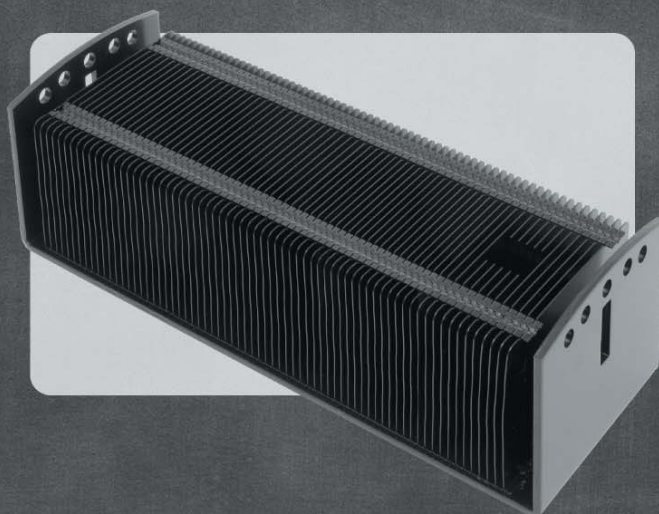
Surface treatment : Electrophoresis

Crafts : Stamping+bonding

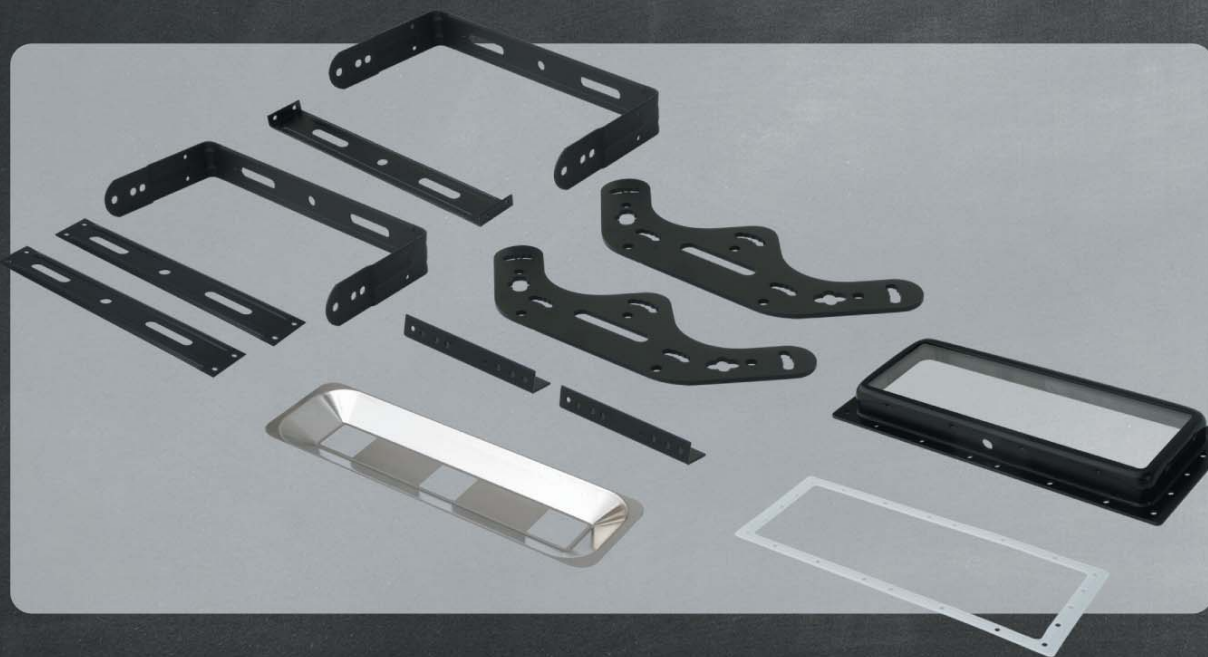
Thermal resistance ($^{\circ}\text{C} / \text{W}$) : 0.3124

Surface area (mm^2) : 1984900

Reference design power (W) : 200W




Accessory:



Example:



 Please visit our website for more detailed information



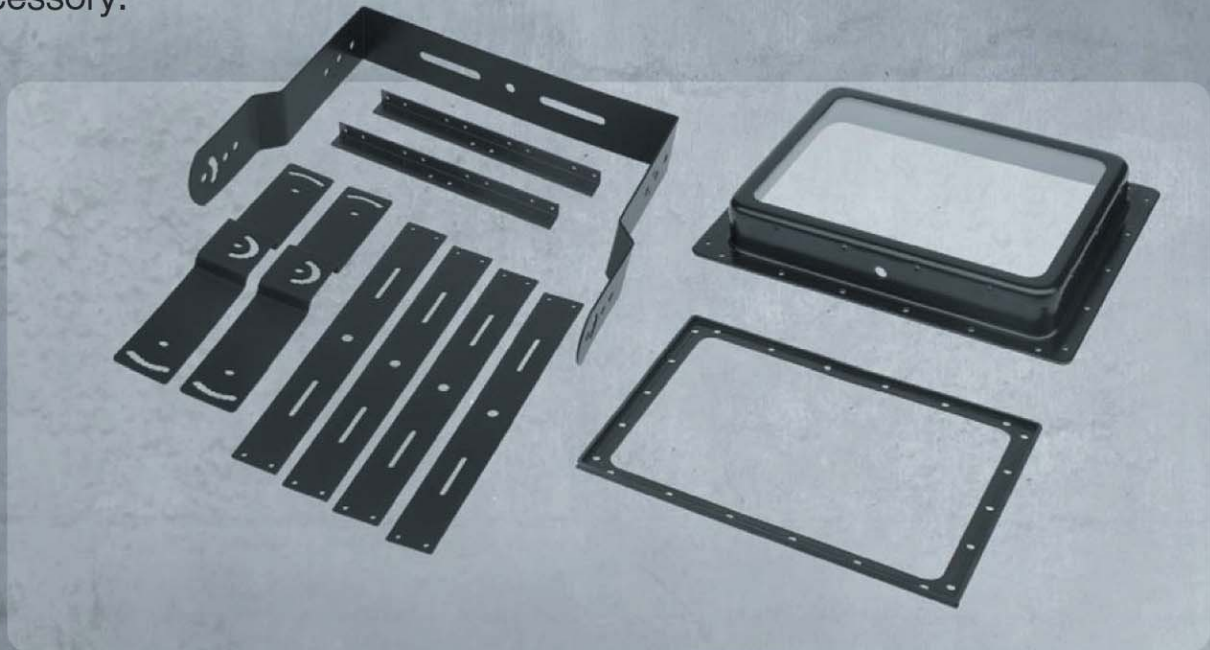
SKD Package Solutions

Igloo SS400 LED Flood Light Knock Down Kit



Dimension (mm) : 400 x 270 x 110
Weight (g) (+/-3%) : 5750
Material : AL1050
Surface treatment : Black Anode
Crafts : Stamping+bonding
Thermal resistance ($^{\circ}\text{C} / \text{W}$) : 0.1875
Surface area (mm^2) : 3912600
Reference design power (W) : 350~400W

Accessory:



Example:









website



facebook

GlacialTech®

洋鑫科技股份有限公司 **GlacialTech Inc.**

地址：新北市中和區235中山路二段352號7樓
7F, No. 352, Sec. 2, Zhongshan Rd., Zhonghe Dist.,
New Taipei City, Taiwan, 235

Tel : +886 2 2244-1227 Fax : +886 2 2244-1228

Email : sales@GlacialTech.com Website : www.GlacialTech.com

