



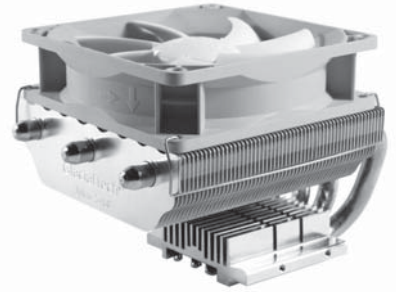
Inspiring Cooling Technology  
www.GlacialTech.com

# User Manual

## Multiple Platforms

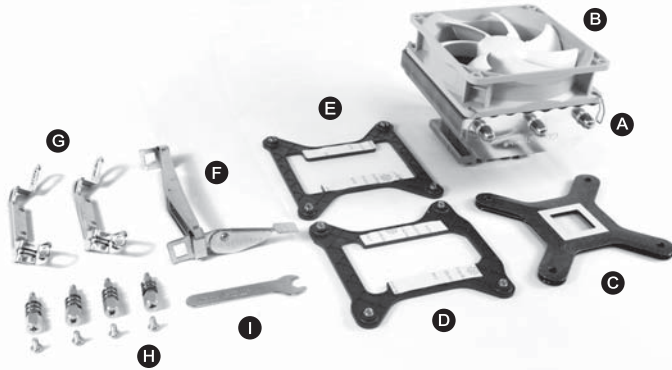
### Igloo 5760 PWM(E)

Intel LGA775, 1156 (i3, i5, i7) and LGA1366(i7)  
AMD AM2, AM2+ and AM3



#### Parts List

- |                            |                                   |
|----------------------------|-----------------------------------|
| <b>A</b> Heatpipe module   | <b>F</b> AMD Clip                 |
| <b>B</b> 9cm axial fan     | <b>G</b> LGA775 /1156 /1366 Clips |
| <b>C</b> LGA775 Backplate  | <b>H</b> Spring screw for Intel   |
| <b>D</b> LGA1156 Backplate | <b>I</b> Screw driver             |
| <b>E</b> LGA1366 Backplate |                                   |

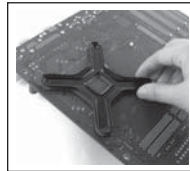


#### Installation 1.

Intel LGA775, 1156, 1366



**Step 1**  
Tear off the sticker from the backplate.



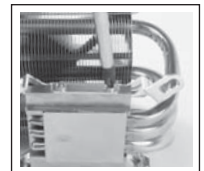
**Step 2**  
Put the 4 backplate holes onto the 4 motherboard holes.

#### Installation 2.



Remove the plastic cover.

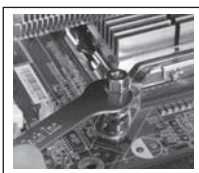
#### Installation 3.



Use M3 screws to fix clip (Intel LGA775, 1156, 1366) on the bottom of cooler.

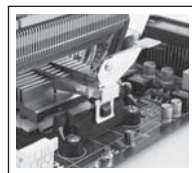
#### Installation 4.

Intel LGA775, 1156, 1366



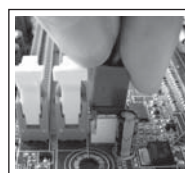
Please the 4 fasteners at the 4 holes of motherboard. Screw in the fasteners with a screw driver clockwise.

AMD Socket AM2 / AM2+ / AM3



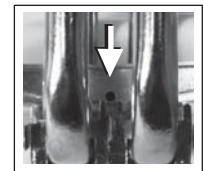
Place the heatsink and clip at the correct position. Turn the clip to the right and fix the heatsink to the RM.

#### Installation 5.



Connect the fan cable connector to the motherboard CPU fan header.

AMD Socket AM2 / AM2+ / AM3



Place the AMD clip at the correct position.

**GlacialTech**<sup>®</sup>  
*Enlighten Your Humanity*

- FAN APPROVED BY CE & UL
  - The specifications are subject to change without notice.
- All brand names and trademarks are the properties of their respective owners.

For further information, please consult our website: [www.GlacialTech.com](http://www.GlacialTech.com)  
© 2010 GlacialTech Inc. All rights reserved.

17-5760000001